

A Learner

Uses skills and tools to ask questions, think carefully in order to gain knowledge. Compare new information to what we already know.

A Contributor

Finds, follows and shares passions. Shows kindness, respect and responsibility for community and the environment.

A Collaborator

Can communicate really well. Shows traits of appreciation, respects different ideas and is good at building relationships. Is part of a team.

A Thinker

Has an open mind, problem solves and thinks creatively. Can adapt and be flexible to change. Thinks things over carefully.



An Innovator

Show creativity, curiosity and imagination. A risk taker who thinks outside the box.

Presentation of Learning Planning Booklet 2016-2017

Name: _____

Mentorship Teacher: _____

The Process...

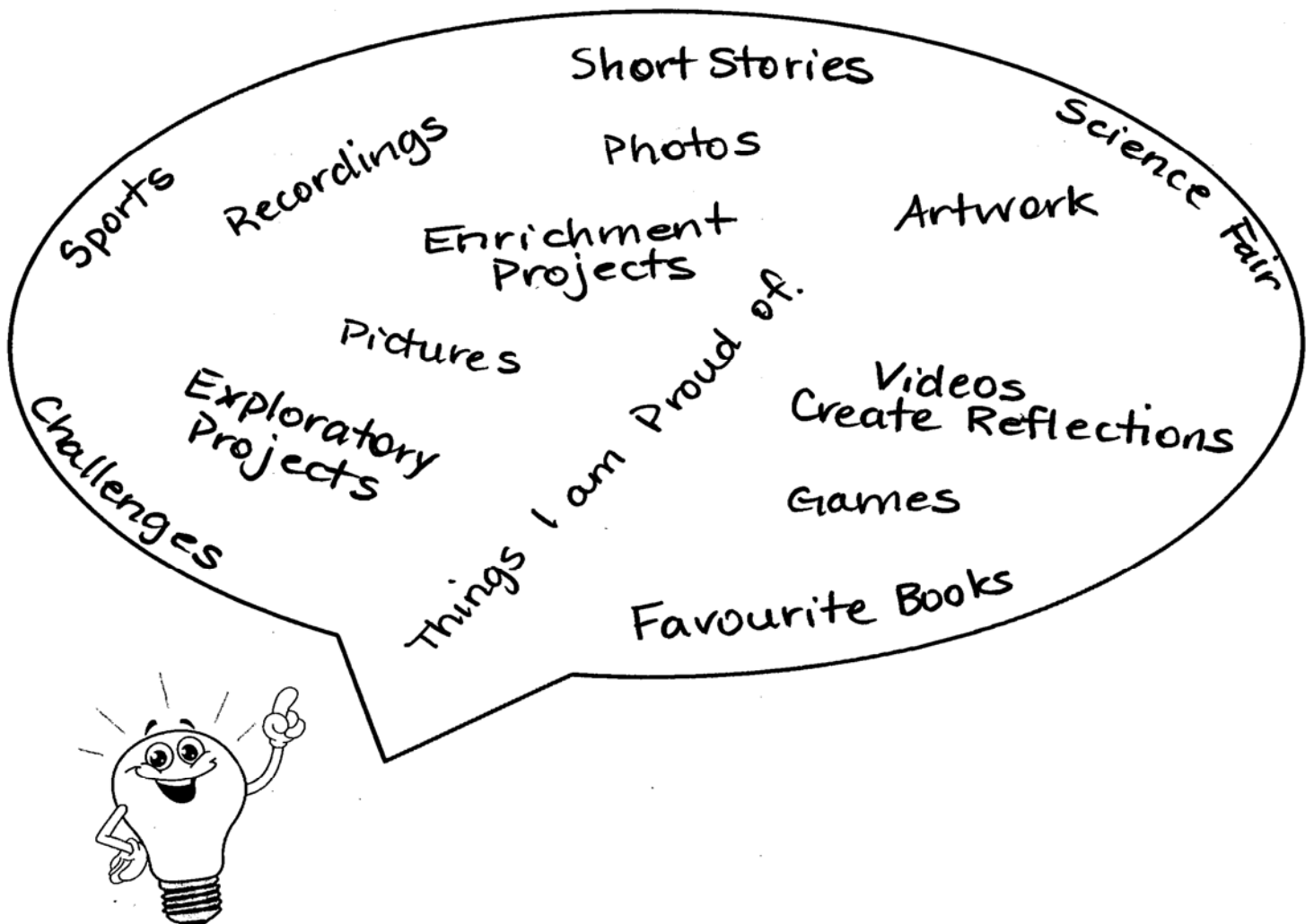
- At the end of the school year there will be three school days for students to present their Presentations of Learning (POL).
- Each class will be split into 2 separate multi-grade groups and assigned one of the presentation days and a time.
- Students will use a variety of ways to show at least three attributes.
- 2 attribute examples should be from school and one can be from outside of school
- Students will also act as an audience, along with a member of the presenter's family, for their fellow classmate's POLs.
- Presentations will be 10-15 minutes long.
- The audience will listen and encourage students during POLs
- The audience will ask questions or make comments regarding the POL



Beginning the process: Collecting Artifacts

The first thing that you need to do is find **artifacts** - things that you can show as evidence of your learning. Think back over the school year. What stands out? What did you love to do? What are you proud of? What was really hard?

You need a minimum of three **artifacts** as evidence of your learning, but ideally you will have five examples. The more examples you have, the easier it will be to get ideas for your presentation. Read through the thought bubble below for some ideas for artifacts:



List your artifacts:

Write a list of your artifacts. One of your artifacts can be from learning that you have done outside of school. At least two artifacts have to be from learning that you have done inside of school. Make sure that you have at least three (but try really hard to find five):

1) _____

2) _____

3) _____

If you have more than three, that is okay! You can present on up to five artifacts. Add to your list here:

Artifact #1 _____

What does this artifact say about me as a learner? Consider each box. If the attribute applies to your artifact, check it off. Then write some notes in the box. If it doesn't apply, leave the box blank:

Thinker	X	Expand. Give examples.
-I saw things from many points of view		
-I solved problems		
-I made judgments		
-I used feedback to improve my work		
-I asked many questions		
Innovator		
-my work was not like anyone else's		
-I took risks		
-I used materials in a different way		
-I created something new		

Collaborator		
-I communicated really well		
-I respected everyone's ideas		
-I did my share of the work		
-I supported others in their work		
-I listened really well		
Contributor		
-I helped others		
-I made my community a better place		
-When I saw a need, I worked to fill it		
-I was kind to others		
Learner		
-I showed my learning in different ways: Visual Verbal Oral Kinesthetic		
-I was open-minded		
-I was motivated to learn		

Artifact #2 _____

What does this artifact say about me as a learner? Consider each box. If the attribute applies to your artifact, check it off. Then write some notes in the box. If it doesn't apply, leave the box blank:

Thinker	X	Expand. Give examples.
-I saw things from many points of view		
-I solved problems		
-I made judgments		
-I used feedback to improve my work		
-I asked many questions		
Innovator		
-my work was not like anyone else's		
-I took risks		
-I used materials in a different way		
-I created something new		

Collaborator		
-I communicated really well		
-I respected everyone's ideas		
-I did my share of the work		
-I supported others in their work		
-I listened really well		
Contributor		
-I helped others		
-I made my community a better place		
-When I saw a need, I worked to fill it		
-I was kind to others		
Learner		
-I showed my learning in different ways: Visual Verbal Oral Kinesthetic		
-I was open-minded		
-I was motivated to learn		



Artifact #3 _____

What does this artifact say about me as a learner? Consider each box. If the attribute applies to your artifact, check it off. Then write some notes in the box. If it doesn't apply, leave the box blank:

Thinker	X	Expand. Give examples.
-I saw things from many points of view		
-I solved problems		
-I made judgments		
-I used feedback to improve my work		
-I asked many questions		
Innovator		
-my work was not like anyone else's		
-I took risks		
-I used materials in a different way		
-I created something new		

Collaborator		
-I communicated really well		
-I respected everyone's ideas		
-I did my share of the work		
-I supported others in their work		
-I listened really well		
Contributor		
-I helped others		
-I made my community a better place		
-When I saw a need, I worked to fill it		
-I was kind to others		
Learner		
-I showed my learning in different ways: Visual Verbal Oral Kinesthetic		
-I was open-minded		
-I was motivated to learn		

Next Steps...

Review the charts that you just completed. They should indicate which attributes of a learner (Thinker, Innovator, Collaborator, Contributor, Learner) you will use in your presentation of learning. Choose the attributes that you checked off the most often, or the ones where you wrote the most information.

Write the Attributes that you will present on below:

Artifact(s) that I will use as examples:	Attributes

You need to present on three attributes. One attribute can be from learning outside of school. Two attributes must be on learning that you did in school. You can present on all five!



Presentation options...

Use your strengths and make your POL your own unique expression of how you have grown as a student. You may use one or more of these presentation styles in your POL.

- PowerPoint/Prezi
- Stop Motion movie
- Narrated Movie
- Stand-and-Deliver
- Poster (tri-fold board)
- Video
- Narrated Slideshow
- Photo Story
- Story Board
- Musical Performance
- Dance/Drama
- Digital Portfolio
- Blog Entries
- Poetry
- Website

Beginning your presentation:

Your presentation must include an introduction, at least three attributes, and a conclusion. The following pages have questions for you to answer to guide you in creating your presentation. Once you have chosen your artifacts and you have the attributes that each artifact demonstrates, this will be the body of your presentation. Start putting your presentation together using any of the formats listed above.

Introduction:

You will need to teach your audience about your background and help them understand what you learned this year. Your introduction should be about 3 to 4 minutes in length. Here are some guiding questions that will help you with introducing yourself.

Background:

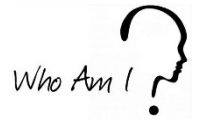
Name and age _____

Which teachers did you have this year? _____

Family members _____

Who are you?

If you had to use three words to describe you, what would they be, and why?



1. _____

2. _____

3. _____

What are you really interested in or good at? _____

What is your favourite thing to do in school? Why? _____

Is there anything you do not like about school? Why? _____

Your hopes and dreams...

What do you most want to accomplish in life? _____



What do you most like to improve on? _____

Presenting on artifact #1 _____

Where and when did you create this artifact?

Go through the charts that you completed about your artifact. Which attribute(s) of a learner does this artifact demonstrate?

Explain **how** you demonstrated one attribute. Explain what that attribute means to you. Use the notes that you wrote in the boxes about your artifact in your explanation.

If your artifact demonstrated more than one attribute, explain how this artifact demonstrated other attributes here. Again, explain how you demonstrated this attribute using the notes you wrote on your chart.

What did you learn about yourself when you created this artifact? How does it reflect the attribute(s) you are presenting?

What is a future goal that you can set for yourself to get even better at this attribute?

Presenting on artifact #2 _____

Where and when did you create this artifact?

Go through the charts that you completed about your artifact. Which attribute(s) of a learner does this artifact demonstrate?

Explain **how** you demonstrated one attribute. Explain what that attribute means to you. Use the notes that you wrote in the boxes about your artifact in your explanation.

If your artifact demonstrated more than one attribute, explain how this artifact demonstrated other attributes here.

What did you learn about yourself when you created this artifact? How does it reflect the attribute(s) you are presenting?

What is a future goal that you can set for yourself to get even better at this attribute?

Presenting on artifact #3 _____

Where and when did you create this artifact?

Go through the charts that you completed about your artifact. Which attribute(s) of a learner does this artifact demonstrate?

Explain **how** you demonstrated one attribute. Explain what that attribute means to you. Use the notes that you wrote in the boxes about your artifact in your explanation.

If your artifact demonstrated more than one attribute, explain how this artifact demonstrated other attributes here.

What did you learn about yourself when you created this artifact? How does it reflect the attribute(s) you are presenting?

What is a future goal that you can set for yourself to get even better at this attribute?

Wrap It All Up!

In your conclusion, you will briefly go over the three attributes that you presented, and then you will summarize what you have told everybody about yourself as a learner. To end your presentation, you will set some goals for the next school year. The conclusion should be 1 to 2 minutes in length.



Review the topics in your POL

My first artifact is _____. Summarize the attribute(s) that you demonstrated. _____

My second artifact is _____. Summarize the attribute(s) that you demonstrated. _____

My third artifact is _____. Summarize the attribute(s) that you demonstrated. _____

My fourth artifact (optional) is _____. Summarize the attribute(s) that you demonstrated. _____

My fifth artifact (optional) is _____. Summarize the attribute(s) that you demonstrated. _____

Conclusions about yourself as a learner

What important things did your examples show about you as a learner in school?

What important things did your examples show about you as a learner outside of school?

Goals for the future

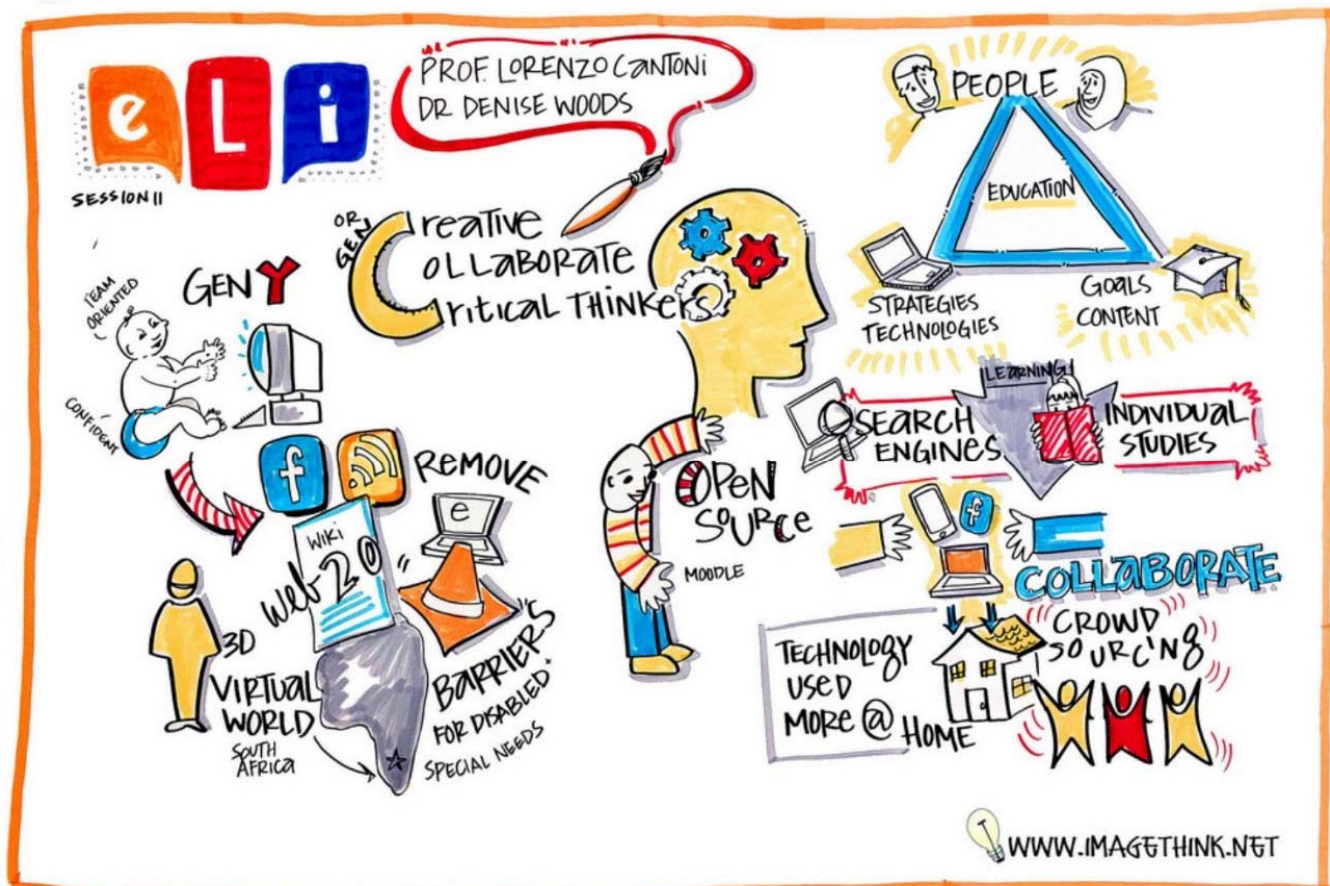
Next year, what attribute(s) would you most like to focus on, and why?

How will this attribute(s) help you attain the goals that you talked about in the introduction?



My Presentation of Learning Checklist

- I have returned my scheduling confirmation form from my family member/guardian about coming to my POL
- I have selected at least three attributes
- I have a descriptive introduction of who I am and what I will talk about
- I have a conclusion that connects all my learning
- I have decided on the style of my presentation
- I have put together my visuals that I need (if needed)
- I have finished the technology aspect of my presentation (if needed)
- I have practiced my presentation and it is 10-15 minutes long
- I am prepared to respond to questions from the audience



Rubric for Presentation of Learning

Name: _____

Learning Outcome	Not Yet Meeting	Minimally Meeting	Fully Meeting	Exceeding
Introduction	Student did not introduce themselves.	Student gave a one or two sentence introduction of themselves. It was difficult to understand the context of their learning.	Student gave a detailed introduction. We learned things about them that helped understand their learning.	Student introduced themselves in an interesting and innovative way. We were excited to hear more about their learning!
Artifact #1	Student did not present on one artifact.	Student presented an artifact, but had difficulty identifying and talking about the attributes it demonstrated.	Student presented on an artifact. They identified one or more attributes and could tell how the artifact demonstrated the attribute(s) in simple, direct ways.	Student presented on an artifact. When they related it to one or more attribute, they showed deep levels of metacognition. Their connections went beyond the obvious.
Artifact #2	Student did not present on two artifacts.	Student presented an artifact, but had difficulty identifying and talking about the attributes it demonstrated.	Student presented on an artifact. They identified one or more attributes and could tell how the artifact demonstrated the attribute(s) in simple, direct ways.	Student presented on an artifact. When they related it to one or more attribute, they showed deep levels of metacognition. Their connections went beyond the obvious.
Artifact #3	Student did not present on three artifacts.	Student presented an artifact, but had difficulty identifying and talking about the attributes it demonstrated.	Student presented on an artifact. They identified one or more attributes and could tell how the artifact demonstrated the attribute(s) in simple, direct ways.	Student presented on an artifact. When they related it to one or more attribute, they showed deep levels of metacognition. Their connections went beyond the obvious.
Extra Artifacts				Student went beyond what was asked and presented on more than three artifacts.
Conclusion	Student did not present a conclusion	Student presented a very brief conclusion.	Student presented a conclusion that summarized the artifacts and attributes that they presented.	Student presented a conclusion that was unique and interesting and effectively summarized the artifacts and the attributes that they presented.
Overall preparation	The presentation was not completed.	Student did the bare minimum.	Student used the given time and put effort into being prepared.	Student spent extra time and great effort into being prepared.

Artifact #4 (optional)

What does this artifact say about me as a learner? Consider each box. If the attribute applies to your artifact, check it off. Then write some notes in the box. If it doesn't apply, leave the box blank:

Thinker	X	Expand. Give examples.
-I saw things from many points of view		
-I solved problems		
-I made judgments		
-I used feedback to improve my work		
-I asked many questions		
Innovator		
-my work was not like anyone else's		
-I took risks		
-I used materials in a different way		
-I created something new		

Collaborator		
-I communicated really well		
-I respected everyone's ideas		
-I did my share of the work		
-I supported others in their work		
-I listened really well		
Contributor		
-I helped others		
-I made my community a better place		
-When I saw a need, I worked to fill it		
-I was kind to others		
Learner		
-I showed my learning in different ways: Visual Verbal Oral Kinesthetic		
-I was open-minded		
-I was motivated to learn		

Artifact #5 (optional)

What does this artifact say about me as a learner? Consider each box. If the attribute applies to your artifact, check it off. Then write some notes in the box. If it doesn't apply, leave the box blank:

Thinker	X	Expand. Give examples.
-I saw things from many points of view		
-I solved problems		
-I made judgments		
-I used feedback to improve my work		
-I asked many questions		
Innovator		
-my work was not like anyone else's		
-I took risks		
-I used materials in a different way		
-I created something new		

Collaborator		
-I communicated really well		
-I respected everyone's ideas		
-I did my share of the work		
-I supported others in their work		
-I listened really well		
Contributor		
-I helped others		
-I made my community a better place		
-When I saw a need, I worked to fill it		
-I was kind to others		
Learner		
-I showed my learning in different ways: Visual Verbal Oral Kinesthetic		
-I was open-minded		
-I was motivated to learn		

Presenting on artifact #4 (Optional) _____

Where and when did you create this artifact?

Go through the charts that you completed about your artifact. Which attribute(s) of a learner does this artifact demonstrate?

Explain **how** you demonstrated one attribute. Explain what that attribute means to you. Use the notes that you wrote in the boxes about your artifact in your explanation.

If your artifact demonstrated more than one attribute, explain how this artifact demonstrated other attributes here.

What did you learn about yourself when you created this artifact? How does it reflect the attribute(s) you are presenting?

What is a future goal that you can set for yourself to get even better at this attribute?

Presenting on artifact #5 (Optional)_____

Where and when did you create this artifact?

Go through the charts that you completed about your artifact. Which attribute(s) of a learner does this artifact demonstrate?

Explain **how** you demonstrated one attribute. Explain what that attribute means to you. Use the notes that you wrote in the boxes about your artifact to explain how you demonstrated this attribute.

If your artifact demonstrated more than one attribute, explain how this artifact demonstrated other attributes here.

What did you learn about yourself when you created this artifact? How does it reflect the attribute(s) you are presenting?

What is a future goal that you can set for yourself to get even better at this attribute?
